

245

## ÞYKKTARMÆLINGAR

M/S Steinunn Finnbogadóttir RE-325  
Ytri –Njarðvík 27-11-2009



Þykktarmælingar voru gerðar á bol og þilföllum skipsins  
Niðurstöður mælinga eru samkvæmt meðfylgjandi teikningum.

Frumh.6 Guðmundur H.Kristinsson



245 5B 5ida

3 Steinman Tim Bogas ditir RE 3RS  
27/11 2009

Bambu Gudam H. H. H. H. H.

|     |     |     |     |     |     |     |     |     |     |
|-----|-----|-----|-----|-----|-----|-----|-----|-----|-----|
| 9.0 | 9.1 | 9.1 | 9.0 | 9.0 | 9.0 | 9.0 | 9.0 | 9.0 | 9.0 |
| 8.1 | 8.2 | 8.1 | 8.0 | 8.2 | 8.1 | 8.0 | 8.2 | 7.8 | 8.0 |
| 7.9 | 8.0 | 8.1 | 8.0 | 8.1 | 8.0 | 7.9 | 8.0 | 7.8 | 8.0 |
| 8.2 | 8.1 | 8.1 | 8.2 | 8.2 | 8.1 | 8.0 | 8.2 | 8.0 | 8.0 |
| 9.3 | 9.2 | 9.2 | 9.2 | 9.2 | 9.2 | 9.0 | 9.2 | 8.9 | 8.9 |
| 9.2 | 9.1 | 9.3 | 9.1 | 9.1 | 9.1 | 9.0 | 9.0 | 9.0 | 9.0 |

18 19 20 21 22 23 24 25 26 27 28 29 30 31 32 33 34 35 36 37 38 39

M. Srinivas Fimbogalathar  
RF 225 27/12009



245

27/12009

March 6  
Srinivas Fimbogalathar

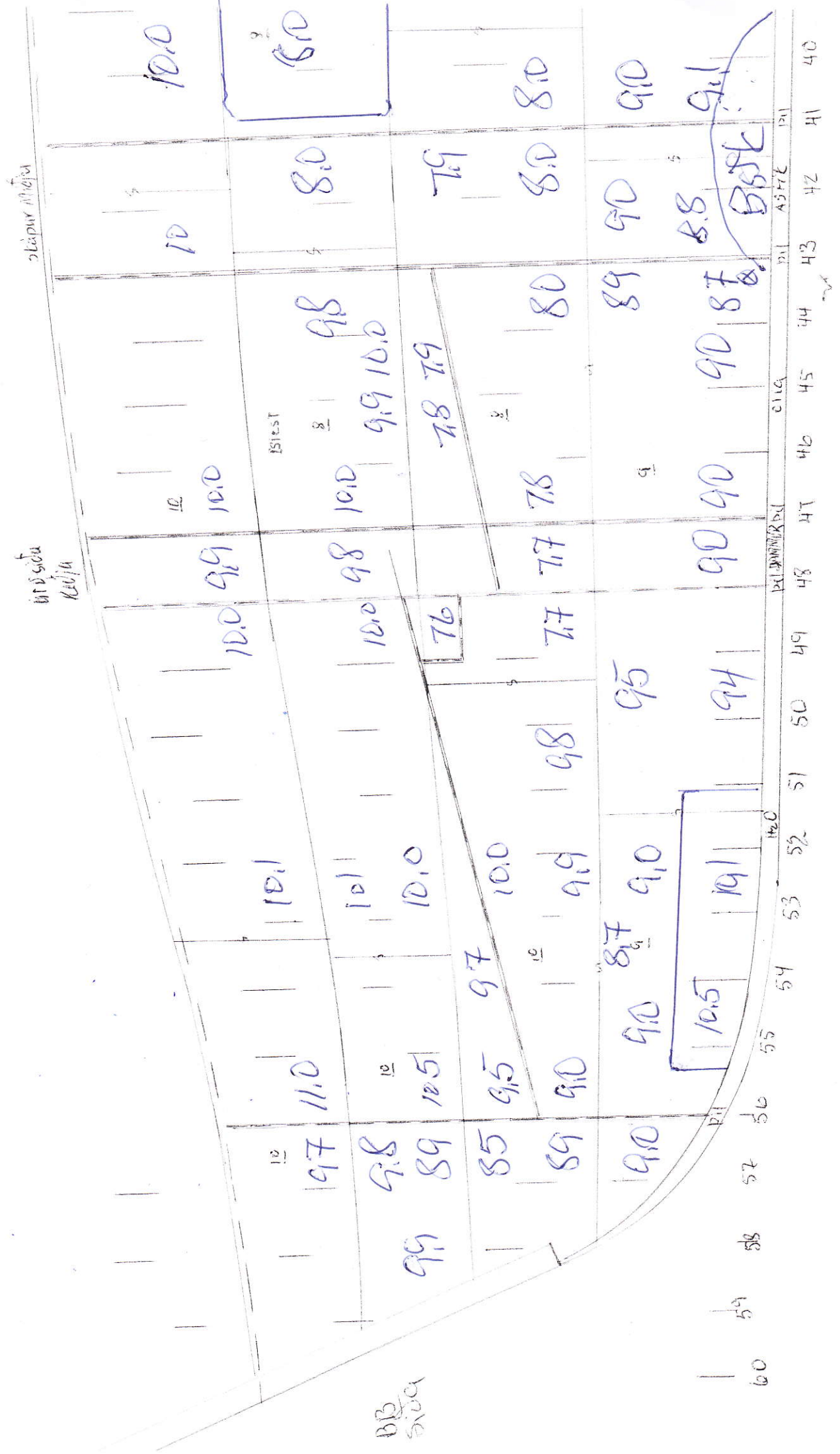
17 16 15 14 13 12 11 10 9 8 7 6 5 4 3 2 1

245

1/3 Sekeloa Timur Bogacottir RR 325

27 Dec 97  
Moo 9/1

Frab. 6  
Moo 1/1/1



245 BB Soda

1/2 Sternum Tympanothorax 3/11/09. Freerichs & Gudmund Kristians

| 31 | 30 | 29 | 28 | 27 | 26 | 25 | 24 | 23 | 34 | 35 | 36 | 37 | 38 | 39 |
|----|----|----|----|----|----|----|----|----|----|----|----|----|----|----|
| 89 | 92 | 90 | 90 | 80 | 80 | 80 | 80 | 80 | 80 | 79 | 80 | 81 | 80 | 80 |
| 89 | 90 | 89 | 90 | 80 | 80 | 80 | 80 | 80 | 80 | 90 | 90 | 90 | 90 | 90 |
| 89 | 90 | 90 | 90 | 80 | 80 | 80 | 80 | 80 | 80 | 90 | 90 | 90 | 90 | 90 |
| 89 | 90 | 90 | 90 | 80 | 80 | 80 | 80 | 80 | 80 | 90 | 90 | 90 | 90 | 90 |
| 89 | 90 | 90 | 90 | 80 | 80 | 80 | 80 | 80 | 80 | 90 | 90 | 90 | 90 | 90 |
| 89 | 90 | 90 | 90 | 80 | 80 | 80 | 80 | 80 | 80 | 90 | 90 | 90 | 90 | 90 |
| 89 | 90 | 90 | 90 | 80 | 80 | 80 | 80 | 80 | 80 | 90 | 90 | 90 | 90 | 90 |
| 89 | 90 | 90 | 90 | 80 | 80 | 80 | 80 | 80 | 80 | 90 | 90 | 90 | 90 | 90 |
| 89 | 90 | 90 | 90 | 80 | 80 | 80 | 80 | 80 | 80 | 90 | 90 | 90 | 90 | 90 |
| 89 | 90 | 90 | 90 | 80 | 80 | 80 | 80 | 80 | 80 | 90 | 90 | 90 | 90 | 90 |

basidia

veluticium

leaf

swamp

DAWNIER BL

Ag 8/61

10.0

10 9.8

89

90 90 90 90  
 90 88 90  
 90 90  
~~90 90~~ ~~91~~

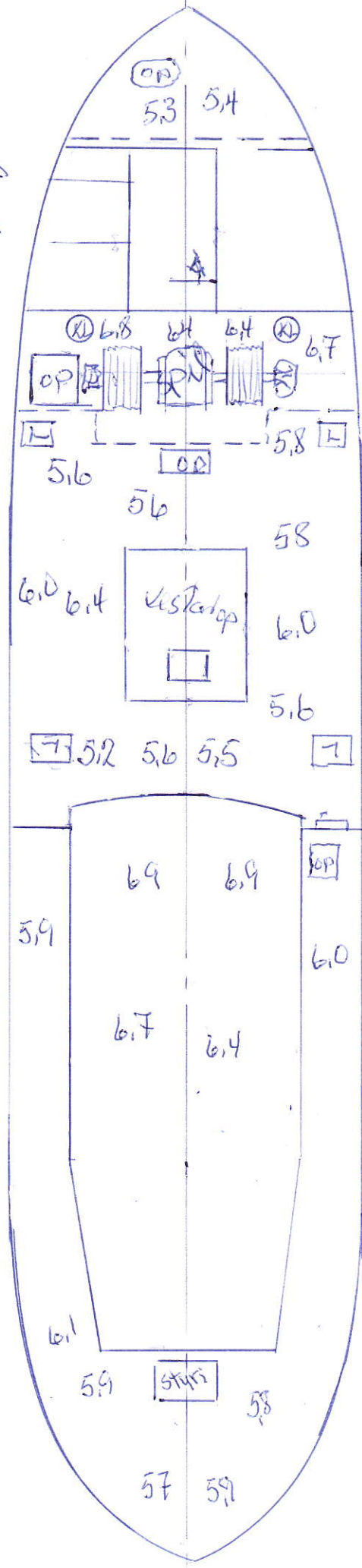


2/3 Steinmaun Finkegadenstr RE-325 27/11 2009  
 Fluchtlo G110000000



245

Steel pillar



27/1/2009 French: b. Guyon H. Anis Juis

Old steel pillar

n/3 steinmann füllbegeleitete REBR5

